



***Cedar Door***

*Timber Garage Doors  
Natural by Design*

*Price List JULY 2021*



Traditional Boarded



	ASHBOURNE	ASHFORD	BAKEWELL	BARLOW	BUXTON	EDALE	HATHERSAGE	HADDON	WESSINGTON
7' 0" (2134)	2827	2630	2219	2219	2742	3158	2539	2539	2539
Side Hinged	3254	3073	2597	2597	3224	3619	2945	2945	2945
8' 0" (2438)	3040	2840	2495	2495	3158	3446	2742	2742	2742
Side Hinged	3481	3271	2892	2892	3619	3917	3160	3160	3160
9' 0" (2742)	3497	3400	2966	2966	3486	3835	3444	3444	3444
Side Hinged	3806	3542	3396	3396	4184	4358	3929	3929	3929
10' 0" (3048)	3922	3574	3436	3436	4286	4379	4166	4166	4166
11' 0" (3353)	4472	4184	3732	3732	4902	4819	4312	4312	4312
12' 0" (3658)	4804	4486	4086	4086	5390	5338	4714	4714	4714
13' 0" (3952)	5417	4906	4832	4832	5912	5698	5287	5287	5287
14' 0" (4267)	6151	5411	5162	5162	6349	6695	5638	5638	5638
15' 0" (4572)	6682	6002	5792	5792	7234	7280	6228	6228	6228
16' 0" (4877)	7903	6852	6132	6132	8231	7902	7205	7205	7205
17' 0" (5182)	8690	7650	6943	6943	8860	8609	7986	7986	7986
18' 0" (5487)	9340	8310	7591	7591	10522	9263	8641	8641	8641

Traditional Solid Panelled



	BELPER	CROMFORD	DUFFIELD	MIDDLETON	CHESTERFIELD	MATLOCK	WIRKSWORTH	TIDESWELL
7' 0" (2134)	3458	2636	3402	3700	3719	2912	2556	3198
Side Hinged	3959	2960	3865	4216	4216	3335	2960	
8' 0" (2438)	3720	2827	3671	3994	4010	3256	2827	3486
Side Hinged	4237	3366	4117	4548	4548	3707	3366	
9' 0" (2742)	4312	3406	4088	4331	4331	3626	3402	
Side Hinged	4823	3876	4630	4894	4894	4133	3880	
10' 0" (3048)	4555	3911	4457	4661	4680	4285	3908	
11' 0" (3353)	4873	4356	4873	5080	5143	4819	4424	
12' 0" (3658)	5305	4843	5311	5536	5628	5254	4843	
13' 0" (3952)	6030	5281	6058	6607	6136	5726	5281	
14' 0" (4267)	6515	5755	6586	7199	6684	6488	5660	6922
15' 0" (4572)	7356	6272	7356	7500	7500	7073	6272	7541
16' 0" (4877)	8076	7152	8016	8420	8168	7709	7152	7787
17' 0" (5182)	8884	7796	8738	9490	9084	8406	7796	
18' 0" (5487)	10099	8496	9802	10813	10612	9263	8496	

## Traditional Panelled



CASTLETON



CHATSWORTH



DERBY



GLOSSOP



HARDWICK



HOPE

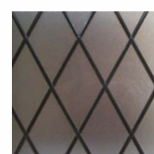
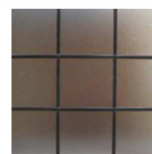
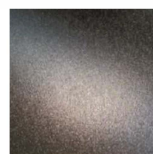


WINGFIELD

<b>7' 0" (2134)</b>	<b>2138</b>	<b>2138</b>	<b>1949</b>	<b>2410</b>	<b>2677</b>	<b>1592</b>	<b>2138</b>
Side Hinged	2416	2416	2328	2747	3073	1864	2416
8' 0" (2438)	2455	2455	2296	2689	2990	1949	2455
Side Hinged	2807	2807	2688	3110	3474	2280	2807
9' 0" (2742)	2874	2874	2796	3217	3541	2296	2874
Side Hinged	3307	3307	3062	3631	4054	2670	3307
10' 0" (3048)	3514	3514	3190	3683	4063	2690	3514
11' 0" (3353)	3848	3848	3542	4226	4579	2982	3848
12' 0" (3658)	4153	4153	3904	4715	5129	3407	4153
13' 0" (3952)	4500	4500	4220	5153	5591	3581	4500
<b>14' 0" (4267)</b>	<b>4709</b>	<b>4709</b>	<b>4526</b>	<b>5689</b>	<b>6055</b>	<b>3793</b>	<b>4709</b>
15' 0" (4572)	5425	5425	5240	6481	7219	4372	5425
16' 0" (4877)	5615	5615	5792	7588	8050	5000	5615
17' 0" (5182)	6371	6371	6571	8220	8474	5467	6371
18' 0" (5487)	6985	6985	7247	8690	9102	5896	6985

### NOTE

All prices are for made to measure sizes, Heights between 6'0" to 7'6", Remmers dip-coat treatment, Shrink-wrap protection, Retractable door gear. Canopy door gear is available on most doors up to 8'0" (2438) X 7'0" (2134). Glazing in all doors is of 4mm toughened safety glass in clear plain, obscure stipple or flemish pattern with either plain, diamond or square leaded design



### Optional Extras

#### Wicket doors

Bakewell with Wicket door Extra **£1082.00**

Wicket doors are available in most doors please ask for availability



### Handles



Standard 'T' handle



(optional)  
Cylinder Euro Locking £55



### Timber frames

Section	70 x 70	70 x 90		70 x 70	70 x 90	For side hinged doors Section 70 x 90 with loose stops	
Softwood up to 8ft (2438)	192.00	<b>222.00</b>	up to 16ft (4877)	<b>262.00</b>	<b>314.00</b>	Up to 8ft (2438) Softwood	<b>262.00</b> Hardwood <b>462.00</b>
Hardwood up to 8ft (2438)	<b>343.00</b>	<b>436.00</b>	up to 16ft (4877)	<b>538.00</b>	<b>665.00</b>	Up to 9ft (2742) Softwood	<b>290.00</b> Hardwood <b>520.00</b>

All are basecoat treated

**Special Heights** are available over 7'6 up to 10' 0" please add **10%** per 12" (300mm) to price lists

## Hardware Packs for Side Hinged Doors



### Traditional Pack

2 no pair of galvanised 24" heavy duty hooks and bands  
1 no pair of garage door stays  
1 no top bow handle bolt, 1 no foot bolt  
1 no Yale lock with finger pull  
all complete with fixing screws and bolts



### Modern Pack

3 no pair of stainless steel 4" butt hinges  
1 no pair of garage door stays  
1 no top bow handle bolt, 1 no foot bolt  
1 no Yale lock with finger pull  
all complete with fixing screws and bolts



### Antique Pack

2 no pair of 18" black antique tee hinges  
1 no pair of garage door stays  
1 no top bow handle bolt, 1 no foot bolt  
1 no Yale lock with finger pull  
all complete with fixing screws and bolts

## Sherwood



TUXFORD



NEWARK



LOWDHAM



BINGHAM



MANSFIELD



SOUTHWELL



NOTTINGHAM



EDWINSTOWE



NEWSTEAD

7' 0" (2134)	2785	2156	2104	2104	2683	2918	2513	2513	2513
8' 0" (2438)	3008	2370	2285	2285	3074	3272	2714	2714	2714
9' 0" (2742)	3312	2842	2600	2600	3355	3458	3086	3086	3086
10' 0" (3048)	3700	3300	3144	3411	3955	3972	3558	3558	3558
11' 0" (3353)	4285	3616	3458	3458	4796	4598	4092	4092	4092
12' 0" (3658)	4632	3997	3947	3947	5130	5003	4556	4556	4556
13' 0" (3952)	5231	4699	4555	4555	5531	5362	4921	4921	4921
14' 0" (4267)	5857	5077	4886	4886	6142	6359	5428	5428	5428
15' 0" (4572)	6545	5948	5605	5605	6942	6865	6001	6001	6001
16' 0" (4877)	7391	6799	6416	6416	7516	7826	6852	6852	6852

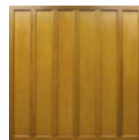
## Sherwood



WORKSOP



RETFORD



KEYWORTH



RADCLIFFE



BEESTON



OLLERTON



CALVERTON

7' 0" (2134)	2104	2104	2104	1598	1859	2366	2500
8' 0" (2438)	2246	2246	2246	1872	2053	2555	2630
9' 0" (2742)	2630	2630	2630	2173	2441	2942	3212
10' 0" (3048)	3034	3034	3034	2485	2784	3353	3571
11' 0" (3353)	3388	3388	3388	2892	3211	4018	4417
12' 0" (3658)	3757	3757	3757	2990	3606	4241	4670
13' 0" (3952)	4123	4123	4123	3281	4054	4457	5010
14' 0" (4267)	4618	4618	4618	3542	4358	5192	5573
15' 0" (4572)	5129	5129	5129	4123	4921	5875	6194
16' 0" (4877)	5604	5604	5604	4904	5399	6462	6794

## Traditional Sectional



TRENT



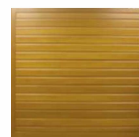
WARWICK



BARLOW



DERWENT



WIRKSWORTH

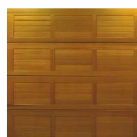
<b>7' 0" (2134)</b>	<b>4861</b>	<b>3894</b>	<b>3894</b>	<b>4747</b>	<b>4457</b>
8' 0" (2438)	5346	4165	4165	5308	4938
9' 0" (2742)	5772	4747	4747	5620	5251
10' 0" (3048)	6392	5251	5251	6161	5734
11' 0" (3353)	6733	5890	5890	6586	6313
12' 0" (3658)	7420	6703	6703	7072	6990
13' 0" (3952)	7943	7246	7246	7787	7439
<b>14' 0" (4267)</b>	<b>8911</b>	<b>7592</b>	<b>7592</b>	<b>8135</b>	<b>7844</b>
15' 0" (4572)	9512	8598	8598	9162	8330
16' 0" (4877)	10169	8948	8948	10015	8717
17' 0" (5182)	11003	9784	9784	10712	9569
18' 0" (5487)	11602	10655	10655	11234	10207



YORK



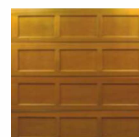
BAMFORD



HASSOP



BRADWELL



EYAM

<b>7' 0" (2134)</b>	<b>5044</b>	<b>4457</b>	<b>4457</b>	<b>3683</b>	<b>3563</b>
8' 0" (2438)	5636	4901	4901	3853	3700
9' 0" (2742)	5870	5308	5308	4165	4010
10' 0" (3048)	6488	5870	5870	4590	4457
11' 0" (3353)	7088	6838	6838	5231	5057
12' 0" (3658)	7808	7246	7246	5909	5734
13' 0" (3952)	8135	7710	7710	6373	6179
<b>14' 0" (4267)</b>	<b>9200</b>	<b>8369</b>	<b>8369</b>	<b>6877</b>	<b>6682</b>
15' 0" (4572)	9704	9162	9162	7476	7321
16' 0" (4877)	10712	9802	9802	7825	7633
17' 0" (5182)	11989	10944	10944	8562	8387
18' 0" (5487)	12958	11776	11776	9182	9007

**NOTE.** All Sectional door prices are for made to measure sizes any height up to 7ft (2134)  
**Special heights** are available over 7ft (2134) up to 10ft (3048) please add **10%** per 12" (300mm) to price list  
**Included** in price 70mm low-headroom gear, fully finished,  
**Locking** is optional **£69.00**

### Colour Options

The colours below are for the Factory fully finishing option which will give the door a hard satin long lasting finish that could last up to 5-7 years before recoating (depending on position and location of door)



Light Oak



Medium Oak



Golden Oak



Dark Oak



Mahogany



Rosewood



Teak



Ebony



Walnut

Note; Due to Cedar natural shading and colouring such colours will vary. Photographic and printing processes make it impossible to guarantee colours from this brochure, and are intended as a guide only. We would therefore advise you to ask for actual colour samples.

Factory Fully Finishing	Doors up to 9ft	Doors from 9ft to 18ft	Frames up to 9ft	Frames from 9ft to 18ft
Our standard colours as above	149.00	293.00	62.00	84.00
White and grey primed	217.00	432.00	89.00	133.00
RAL/BS colour ranges	363.00	725.00	121.00	158.00
NB. Ebony/Black priced as RAL 9005 not included in our standard colours.				





# DOOR SPECIFICATION AND WARRANTY

## TRADITIONAL

All the traditional Up and Over, Side hinged and Sectional range of doors are manufactured from the finest grade of Kiln Dried Western Red Cedar selected and crafted using traditional door construction methods and joints, i.e. mortice and tenon, glued and wedged on all structural timbers to give strength and a long lasting service, proven over many years of door manufacturing. All top, middle and bottom rails are solid Cedar, finished to a thickness with nominal width sizes to suit the size of door, on doors over 8'0 x 7'0 may have lateral and vertical timber or steel bracings (with the exception of side hinged doors) to give strength and stability to the door also to minimise bowing and deflection to the door when in an over-head position.

## SHERWOOD

Sherwood range of timber doors are manufactured using selected kiln dried 16mm Cedar facings glue bonded on to 6mm exterior plywood backing sheets of nominal widths to suit door size and style. They are then mounted into a pre-finished Aluminium boundary frame with steel lateral bracings to reinforce the strength of the panel.

## GLAZING

Glazing in Traditional doors is of 4mm safety glass in plain, stippled pattern with either plain, diamond or square leaded design. In Sherwood doors it is of Acrylic pvc sheet in either plain or stippled.

## IMAGES

All door images in this brochure are of 7'0 x 7'0 (2134 x 2134) single size doors, on larger doors some rail sizes and panel configurations may change.

## PRODUCT CARE AND FINISHING INSTRUCTIONS

**Timber** is an organic substrate material with natural characteristics than can acclimitise itself, no matter the "species" to different environmental conditions prevailing in its localised "fixing or place". Therefore the company "**CEDAR DOOR**" accepts no liability or responsibility for variations occurring in our "Timber" products supplied, in any of the following descriptions i.e. "colour variations, movement either lateral or longitudinal, splitting, shakes, water damage ingress or exit, resin exudations or chemical spillages.

- Conversely **Timber** substrates can naturally expand and contract according to environmental conditions.
- Moisture content and humidity may open and close joints and some minor curvature may occur.
- Any curvatures that occur however, will not affect the long term performance or life of this natural material.

Please note: **Cedar** is organically grown with natural colour and grain variations, this is a feature of **Cedar**. We make every effort to harmonise the effect by hand matching all components part used in manufacture.

### Protection (Basecoat)

All timber doors and components are supplied with a dip immersion coat of Remmers Induline GW306 colour ref: 006 light oak; this operation is for temporary protection for transit and installation purposes only.

Fully finishing of garage doors is available at an extra cost. If our product becomes exposed to excessive water splashes or rain it may result in water marks or stains which could affect the final coatings of the door. We recommend that the product receives a full specification of finishing coats immediately after installation to all surfaces with a Remmers Finishing coat system, all to the coatings manufacturer's instructions.

### Full Factory Finishing Option

The full factory option is supplied in various coloured woodstains and will provide a 5 year erosion period. If the door becomes affected by rain soon after installation you may notice a light coloured staining on the finish of the door but will disappear when dry this is caused by the curing process of the Remmers Induline LW700 which will disperse and disappear once fully cured which can usually take anything up to six months depending on many parameters. Humidity and weather conditions has no adverse effect to the quality and finish of the door.

- Consideration should be taken into the selection of the final colour of the door in certain compass locations i.e. the selection of dark colours for doors (south facing or in constant direct sunlight) could result in a excessive heat uptake into the substrate causing excessive extracting of moisture content (drying and effect) resulting in abnormal distortion of the door.

### Storage

- All doors are delivered with a polythene shrink-wrap protection which should be left on just prior to site coatings applications.
- Do not puncture the polythene shrink-wrap before installation.
- Prior to installation doors must not be stored in direct sunlight.
- Do not expose the doors to water contamination of any description/or staining may result.
- This does not apply to fully finished doors.
- Door must always be stored in an upright position and protected from site and weather contaminations before fixing.

### Quality Check

Timber is a natural material, defects i.e. small knots, close wide or short grain, surface shakes or splits or grain lift, although we endeavour to eliminate most of these phenomena in production, some may still appear after installation. The company (**CEDAR DOOR**) cannot be held responsible for any defect (Naturally Occurring) after installation.

- A visual quality control check of every door supplied by (**CEDAR DOOR**) is carried out before supply.
- The (CUSTOMER) should carry out in natural daylight (THEIR OWN VISUAL INSPECTION) prior to installation.
- Stand at a distance of 3 metres (10 feet) to view the overall appearance. The door is acceptable if, taking into account the facts below, none of the following is readily visible on the face of the doors from this distance.
- Marks or distortion associated with the manufacturing process.
- Vertical and lateral deflection may occur up to 1" (25mm) on door up to 8ft wide/height and 21½" (60mm) on doors up to 16ft wide.
- Minor indentations, marks or scuffs on the surface.
- Minor paint or stain blemishes.
- Any defect/anomaly must be reported to (**CEDAR DOOR**) within 48 hours of goods received.



# Door Gear Specification

## CEDAR CD 100 RETRACTABLE DOOR GEAR

CD100 Gear has the advantage of maximum clearance on frame opening width at average door mirror height i.e. drive through width, and the lower weather strip is of soft rubber, therefore avoiding any damage up to frame opening width. With a multi spring unit at high level with finger safe springs, with a choice of two types of locking handles, available on most doors up to 2438 (8ft) wide or 45kg (100lb).

## CD 150/200/250

These gears are based on the traditional retractable gearing available on garage doors. Our latest design has a number of benefits: all parts are rust protected with either galvanised or zinc plating for lasting looks, all bearings surfaces are made of nylon for very low maintenance, long lasting reliability and smooth running, even our springs are galvanised. All doors fitted with the above operating gears come supplied with the top roller brackets and weather strips are pre-fitted to the door for ease of installation.

## CEDAR CANOPY OPERATING GEAR

Doors specified with canopy operating gear come complete with the gear pre-fitted to the door for quick and easy installation.

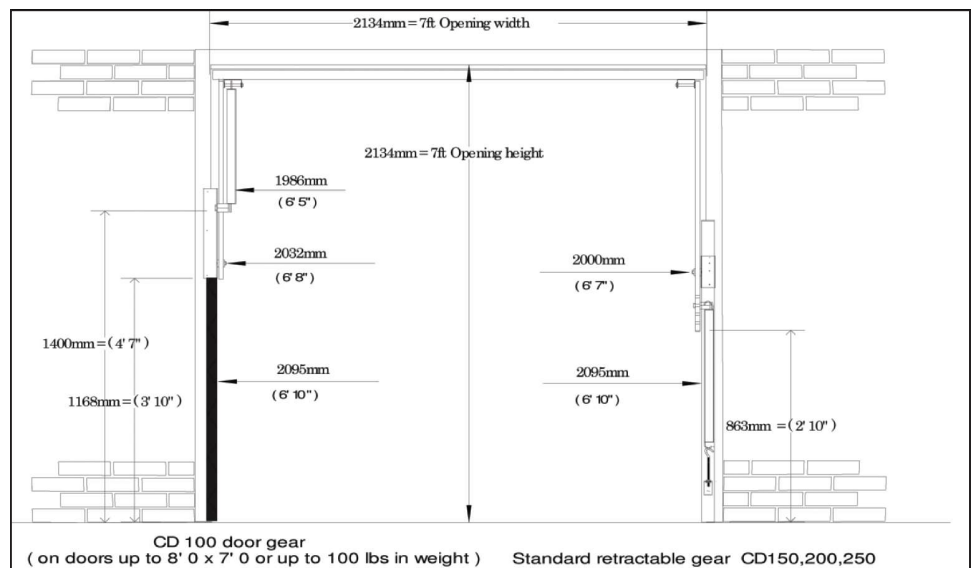
The latest canopy gear is very robust and has a number of benefits, a well balanced overhead torsion spring with 3mm cone and cables including an anti-drop system to prevent door dropping in the event of a cable or spring break, a strong 'U' steel section joins the door arm to the roller and spindle giving the whole door a rigid feel. Our rollers are of a large diameter for smoother running and improved location. Security has been well thought out with 3 point locking and 2 roller security brackets meaning that a closed and locked door has 5 effective fixed positions.

## CE and CPD Compliance

All our timber doors and hardware meet to latest CE and CPD demands.

## Comparison Chart, showing clear opening widths CD100 & CD150-250

Note: The chart below is based on a 7'0 x 7'0 (2134 x 2134) door, the thickness of the door will also reduce the opening height i.e. door up to 8ft (2438) wide = 80mm, 10ft (3040) 120mm 16ft (4870) 155mm on all solid timber doors, 85mm on all Sherwood doors.







***Cedar Door***

Wimsey Way, Alfreton Trading Estate, Somercotes, Derbyshire DE55 4LS  
Telephone: 01773 529269 Fax 01773 529268

email: [sales@cedardoor.co.uk](mailto:sales@cedardoor.co.uk) website: [www.cedardoor.co.uk](http://www.cedardoor.co.uk)